

Sustainability appraisal of land use development plans in the UK

Janine Barrow



Strategic environmental assessment

2001/42/EC on the assessment of the effects of certain plans and programmes on the environment

- Plans and programmes...not policy
- Set the framework for development consent
- Likely to have significant environmental effects



Background – Urban Planning

National - Communities Plan (Sustainable Communities: Building for the future)

Regional – Regional Spatial Strategies (nine regions)

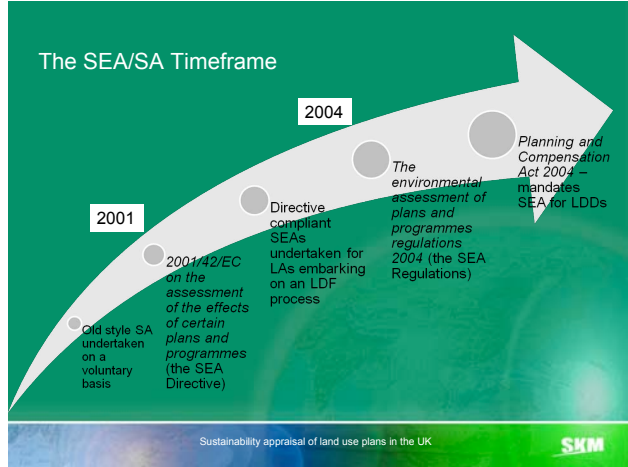
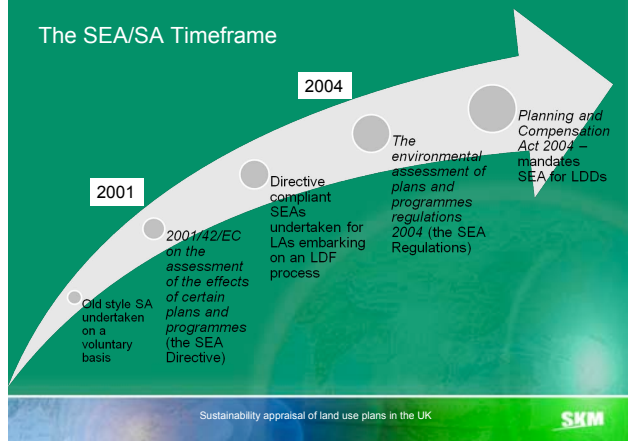
Local – Local Development Framework (replaced local plans)

Local:

- Development Plan Documents – core strategy, proposals map, area action plans
- Supplementary Plan Documents
- Statements of Community Involvement – (not subject to SA)



The SEA/SA Timeframe



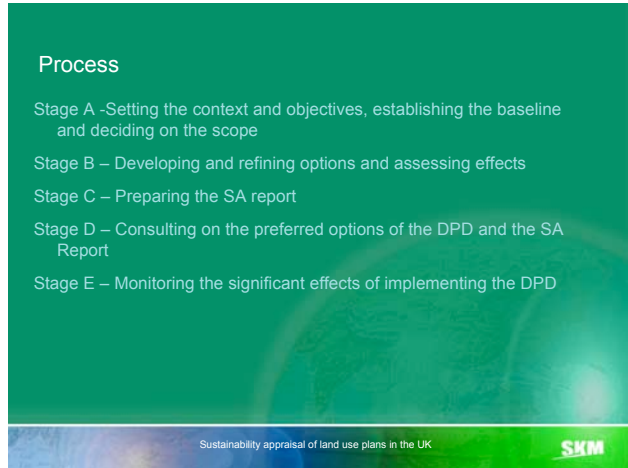
Legal considerations (Annex 1f)

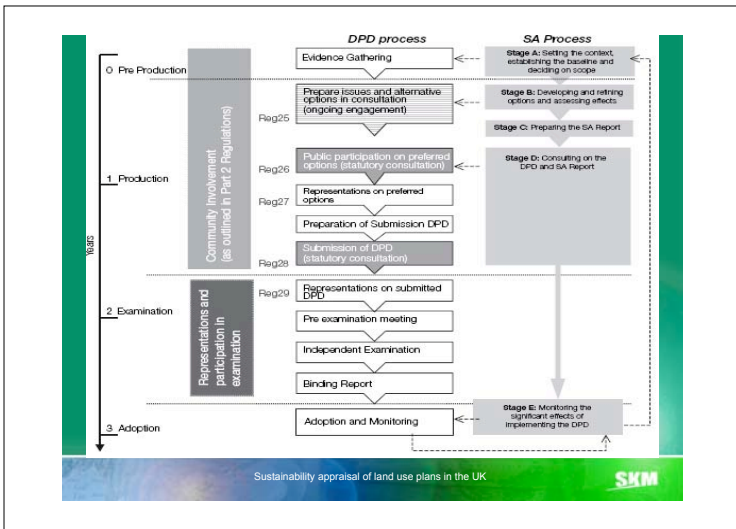
- Biodiversity
- Flora and fauna
- Landscape
- Climatic factors
- Soil
- Air
- Water (including resources, quality and groundwater)
- Cultural heritage (including architectural and archaeological heritage)
- Material asset (including energy, waste, previously developed land and minerals)
- Population
- Human health
- The interrelationship between these factors
- SA - other sustainability issues



Process

- Stage A -Setting the context and objectives, establishing the baseline and deciding on the scope
- Stage B – Developing and refining options and assessing effects
- Stage C – Preparing the SA report
- Stage D – Consulting on the preferred options of the DPD and the SA Report
- Stage E – Monitoring the significant effects of implementing the DPD





SA Stage	Example issue – health and social deprivation
<p>Stage A – Setting the context and objectives, establishing the baseline and deciding on the scope</p>	<p>Review of PPPs – review national and regional health care planning documents/policies to determine context and applicability</p> <p>Baseline sources – health inequalities, public health, crime, household survey, deprivation indices, social exclusion</p> <p>Sustainability issues – deprived wards and clear health inequalities within plan area</p> <p>Sustainability Objectives – To reduce poverty and social exclusion and health inequalities</p> <p>Indicator – Index of multiple deprivation</p> <p>Proportion of people living in the most deprived 10% and 25% of wards</p>
<p>Stage B – Developing and refining options and assessing effects</p>	<p>Option 1 – Low degree of change – refurbish existing housing stock in X ward</p> <p>Option 2 – High degree of change – demolish existing high rise stock in X ward and add additional low rise housing stock</p> <p>Options maps created</p>
<p>Stage C – Preparing the SA report</p>	<p>Options assessed in the context of the sustainability objectives. Assessment considers temporal, spatial, transboundary, synergistic and cumulative impacts. Process and results presented in the SA report</p>
<p>Stage D – Consulting on the preferred options of the DPD and the SA Report</p>	<p>SA report published for public consultation and events held to allow public involvement in options evaluation</p>
<p>Stage E – Monitoring the significant effects of implementing the DPD</p>	<p>Action plan inclusive of roles, responsibilities, QA, timing etc for monitoring indicators (Index of multiple deprivation) and for realising changes in the plan as a result of the findings</p>

Success

- Legislative basis
- Options evaluation – stakeholder input
- Monitoring – continual improvement
- Consolidate baseline and monitoring data collection
- Facilitate complementary strategies
- Clear and coordinated planning from National to Local
- National to local sustainable development policy – filters down
- SEA – iterative and cyclical process – not stand alone appraisal
- Synergistic and cumulative effects – systems view

Source: Sustainability appraisal of land use plans in the UK. SKM logo.

Issues

- Are we asking the right questions? – framework formulation
- National Plans – 'get out of jail free' card
- Overwhelming planners
- Guidance and capacity building – costs substantial and not budgeted
- Policy overload
- Earlier community involvement – options evaluation

SUSTAINABILITY our people, our clients, our planet

Source: Sustainability appraisal of land use plans in the UK. SKM logo.

Further information

- <http://www.communities.gov.uk/publications/planningandbuilding/sustainabilityapp/050511>
- <http://www.ssa.info.net/>

Janine Barrow
Senior Environmental Planner
Sinclair Knight Merz
Tel: 0448 975 200
Email: jbarrow@skm.com.au

SUSTAINABILITY our people, our clients, our planet

Source: Sustainability appraisal of land use plans in the UK. SKM logo.